



Screen Saver

Version 8.6

Contents

Health one Version	3
Screen Saver.....	4

Health one Version

This document will help you become familiar with the new features in Health one version 8.6. To ensure you are using the correct version, go to Help > About and check the version from here. If you are having any problems upgrading, please contact support on 01 4633000.



You are using ...

HEALTH one™
Clinical management, for life

Version 8.6.0.2235

Copyright (c) 1986-2018 Helix Health Ltd
All rights reserved.

HELIX HEALTH

This product is licensed to

Name	test
Address	
MS number	
License N°	ebdb7e-eeedb-d8eedb

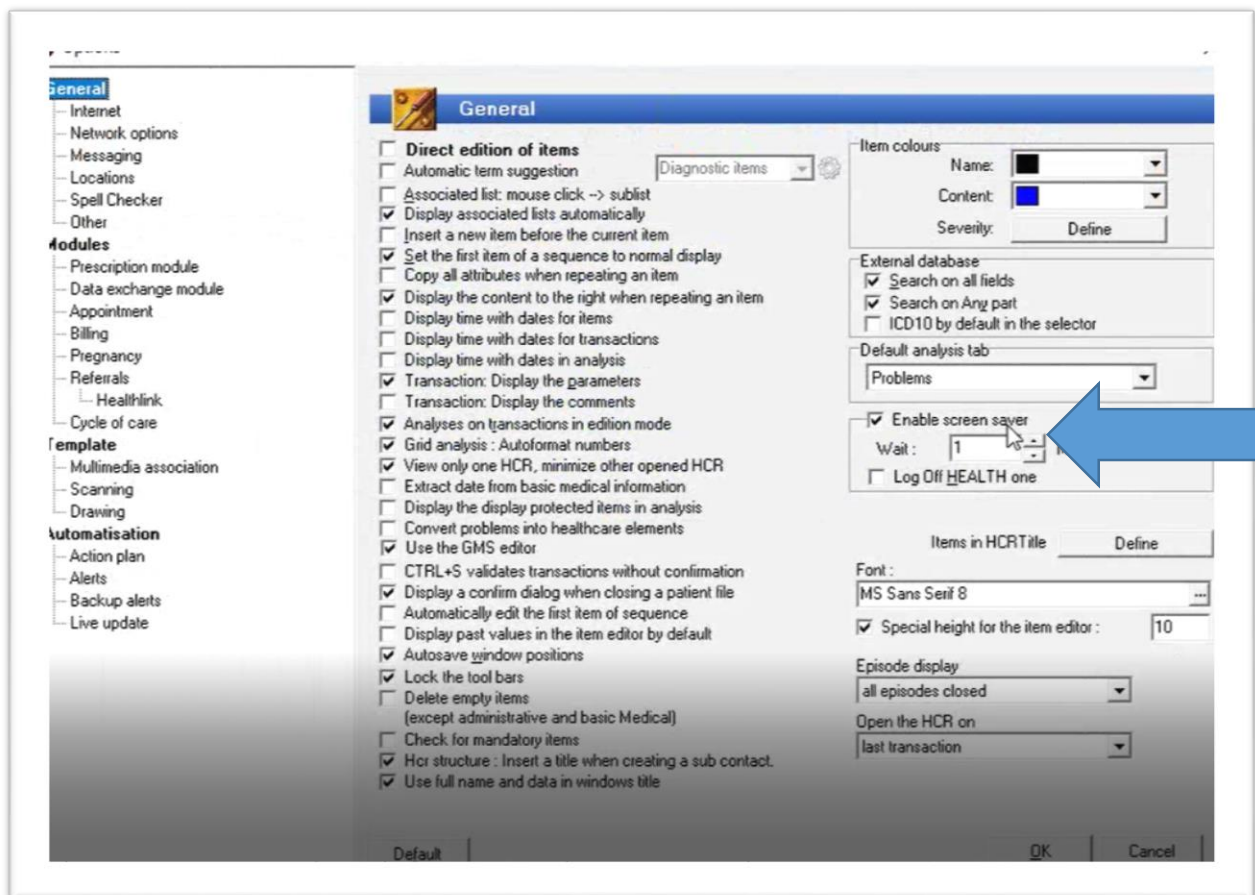
Warning
This computer program is protected by copyright law and international treaties.
Unauthorised reproduction or distribution of this program or any portion thereof, may result in severe civil and criminal penalties, and will be prosecuted to the maximum extent possible under the law. Please see Licensee Agreement for details.

Helix Health Ltd
3094 lake Drive, City West
Dublin 24, Ireland
+353.1.4633000 (General)
+353.1.4633098 (Support Line)
Email customersupport@helixhealth.com

Screen Saver

The screensaver is a new feature in this version of Health One that will allow you turn on a setting that will activate a screensaver if you have been away from Health One for a set time period.

To begin, go to 'Tools' - 'Options' and on the right hand side you will see a check box 'enable screen saver'.



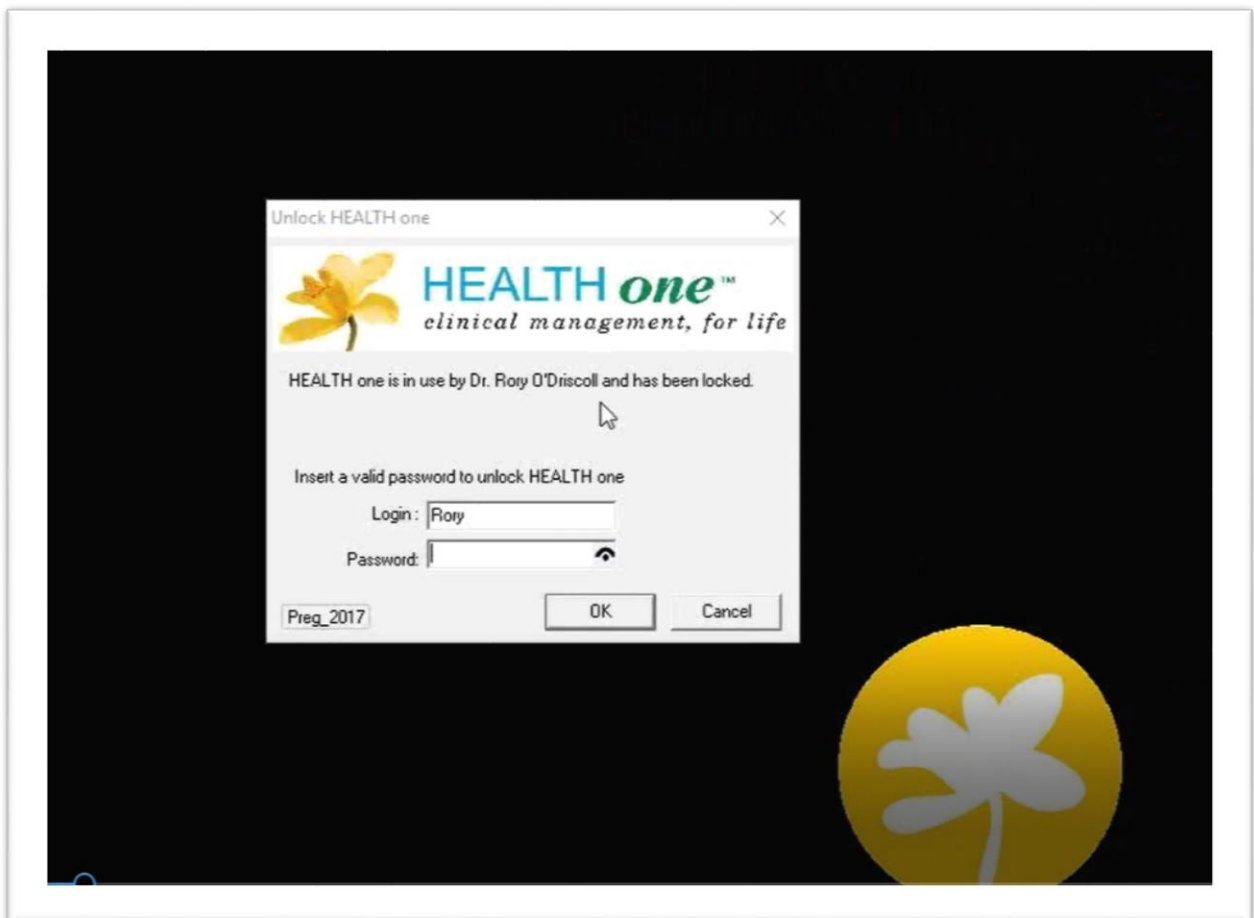
This is NOT ticked on by default, you must tick this box to activate this setting.

Once ticked, this will activate the screensaver after a period of inactivity. Click 'OK' to save.

In the example here, we will activate it after one minute. After you have been away from your computer for one minute, and you come back to Health One, the Screen Saver will have activated and you will be presented with this screen.

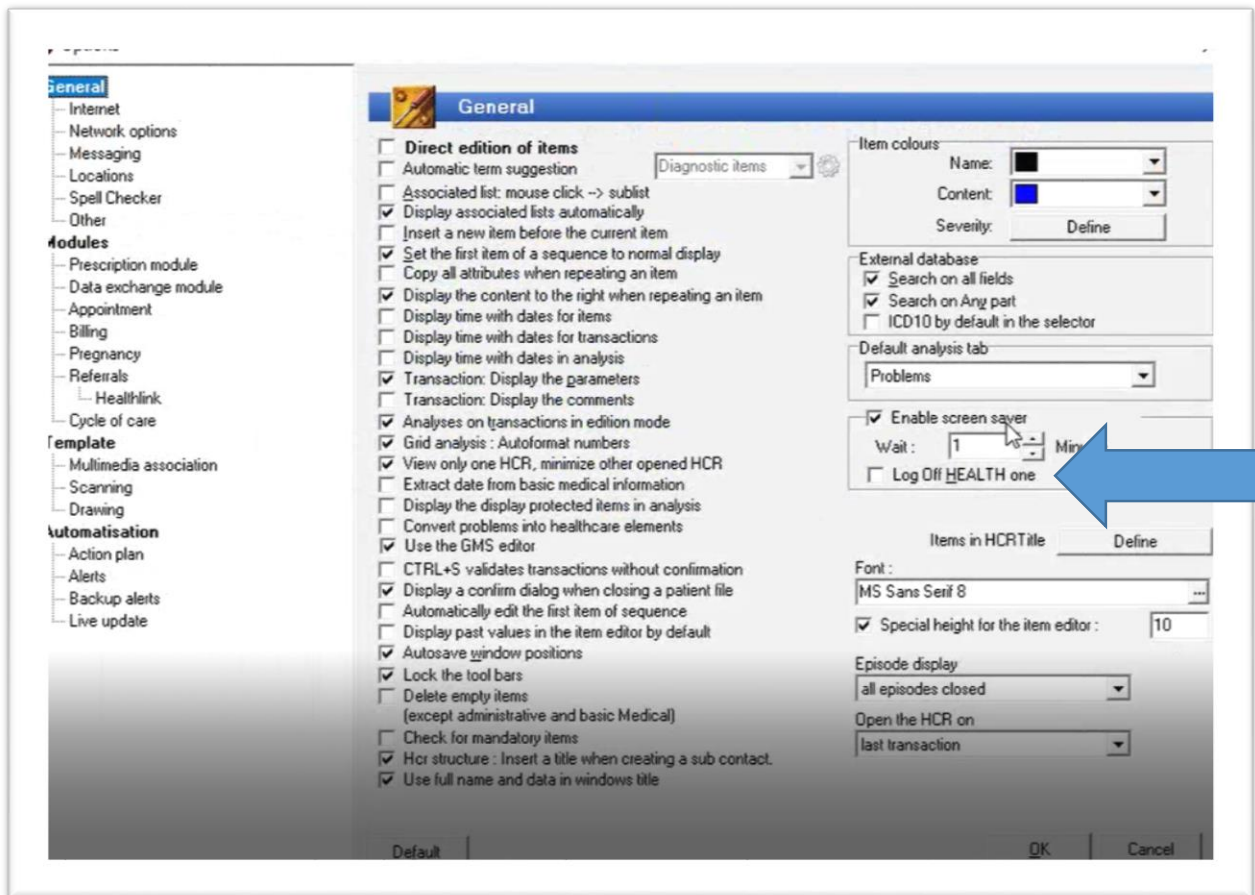


Once you press enter, or click anywhere on the screen, you will be prompted to log back in.



Once you log in, you will be back exactly where you were before the screen saver activated. If you are a different doctor logging in, the patient who was previously opened will be closed, and all of the information input will be saved and you be back at the patient selector.

There is another setting under 'Tools' 'Options' that you can tick on 'Log Off Health One'



If you tick this box, it won't matter who is logged in, once it times out, Health One will be closed completely, and you will have to log in from the beginning.

Please note, these functions do not take over from the Windows Screensaver, this is just a screensaver in the Health One programme.